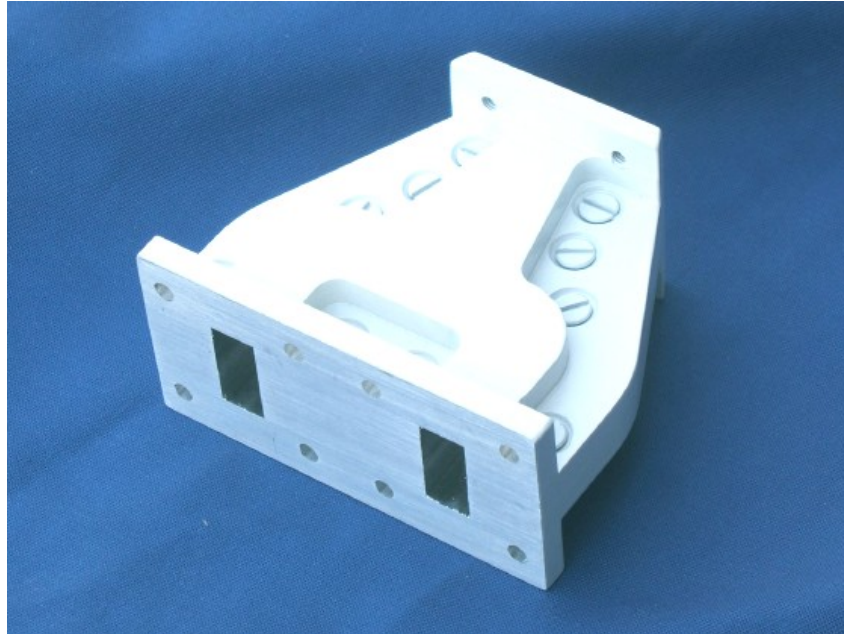


Ku Band Power Divider



Our compact, rugged power divider is designed as an economical hot-standby solution for TVRO applications where reception continuity is essential. The divider simply fits to any feed with a standard WR75 (WG17) flange and will accommodate two standard size LNBS side by side. As the divider is completely passive, with no moving parts or power requirement, it enables easy retrofitting to existing systems and minimises installation time. The device is fully machined from cast aluminium tooling plate for maximum stability and the finest possible internal finish.

If variations on this item are required for your project, we will be happy to offer our design and engineering services. We offer a fast, flexible range of solutions to meet the vast majority of prime focus applications.

Please contact us for a quote or a technical proposal.

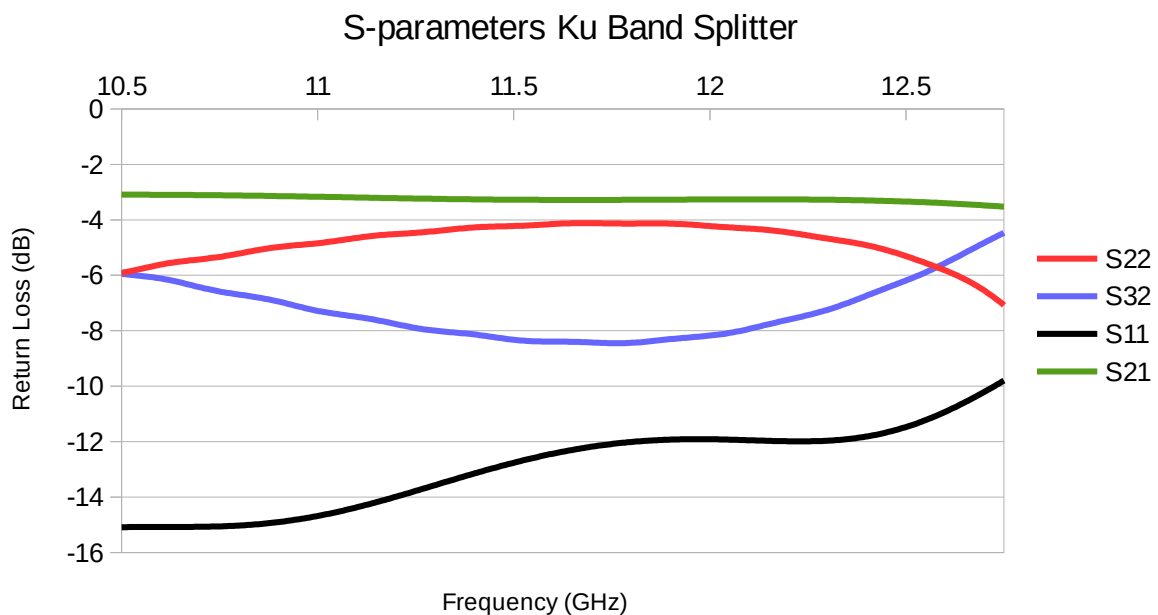
Elite Antennas designs & manufactures a wide range of satcom antennas, meteorological antennas and waveguide systems for high-end customers including defence agencies, commercial broadcast networks, systems integrators and research agencies.

Contact us today to discuss your company's requirements.

Technical Specification

| | |
|----------------------------------|--|
| Operating frequency | 9.5 - 12.5 GHz |
| Stock material | Aluminium tooling plate |
| Dimensions | 75mm Length (along feed axis) 85mm Width (across feed axis) |
| Interface | WR75 (WG17) flanges |
| Fixings | M4 or 8-32 UNC, tapped at feed end, clearance at outputs |
| Weight | 260g |
| Power requirements | None (purely passive) |
| Isolation between outputs | Typically 8dB across operating range |
| Insertion loss - Input to output | Maximum 0.5dB (+3dB) |
| Finish | Powdercoat matt white |

S-parameters



S-parameter Definitions

S_{11} is the power reflected from the common port into the feed.

S_{22} is the power reflected back at either of the WG17 ports.

S_{32} is the isolation between the split ports.

S_{21} is the power reaching either of the split ports from the common port.

*Contact Elite Antennas for more information on applications
and related products, services and systems.*



Registered in England 07441103 Phone: +44 (0) 1568 612050
sales@elite-antennas.com - www.elite-antennas.com
Designed and made in Great Britain

