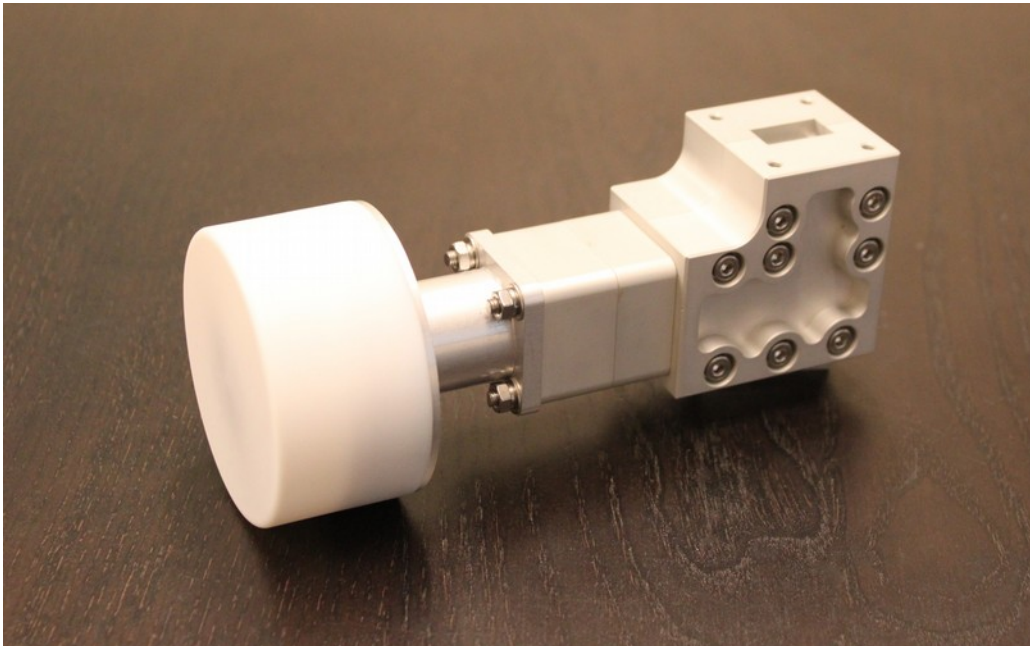


High Performance Ku Tx/Rx 10.5 - 14.5 GHz Dual Port Hybrid Mode Feed Assembly Eutelsat Compliant, MODEL 90468



Elite's Ku Transmit/Receive Hybrid Mode feed and OMT assembly exceeds Eutelsat's demanding specification EESS 502 (Standard M) for Cross Polar Isolation.

The feed is designed to cover the Super Extended Ku bands of Rx (side port): 10.5 - 12.75 GHz; & Tx (through port) of 10.5 - 14.5 GHz. This allows the feed to be used as dual port Receive only or Transmit/Receive - particularly important for multi-application antennas. Port to port isolation exceeds 60dB making it suitable for use without a transmit reject filter in many applications.

Features

- Feed performance exceeds the EESS 502 (Standard M) envelope over Tx and Rx bands
- Covers the Super Extended Ku Rx band, 10.5 - 12.75 GHz; and Tx 10.5 - 14.5 GHz
- Port to port isolation exceeds 60 dB – Enables use without an additional TxRx filter
- Easy screw on / screw off replaceable radomes are available reducing maintenance / replacement cost and time.

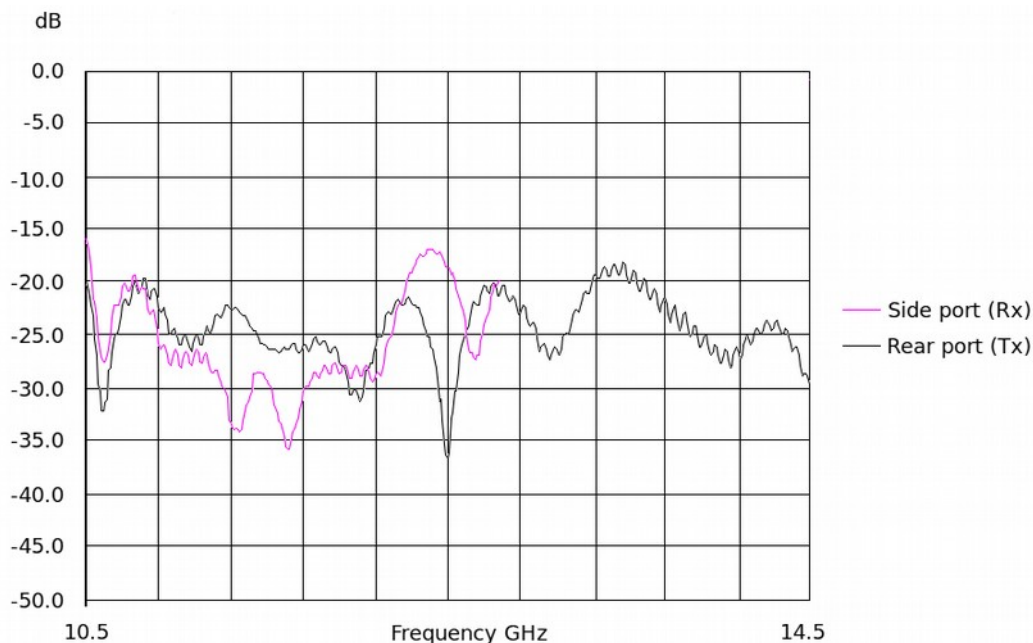
Elite Antennas designs & manufactures a wide range of high performance satcom antennas, meteorological antennas and waveguide systems for high-end customers including defence agencies, commercial broadcast networks, systems integrators and research agencies.

Contact us today to discuss your company's requirements

Technical Specification

Model No. 90468	
Frequency Range	Rx Band 10.5 - 13.0 GHz Tx Band 10.5 - 14.5 GHz
Dimensions	148mm (L) x 63mm (W) x 70mm (H)
f/D	0.34 - 0.40 <i>A feed design suitable for offset reflectors with f/D of 0.6-0.8 is also available</i>
Polarity	Dual Linear
Stock material	Aluminium 6082
Interface	2 x WR75 (WG17) flanges
Fixings	M4 tapped/through holes at WR75 (WG17) interfaces
Weight	490g
VSWR (typical)	Rear Port < 1.2:1 Side Port < 1.3:1
Isolation (typical)	> 60 dB, tested port to port
Radiated Cross Polar	> 40 dB
Finish	RAL9010 white polyurethane as standard. Clear anodised is also available

Feed Assembly Return Loss



Contact us today to discuss your company's requirements



Phone: +44 (0) 1568 612050
sales@elite-antennas.com - www.elite-antennas.com
Designed and made in Great Britain

